

# Keep Aiming High for Mississippi Students

Mississippi School Boards Association

February 19, 2019



**Carey M. Wright, Ed.D.**  
State Superintendent of Education

## Blue Board of Education Goals FIVE-YEAR STRATEGIC PLAN FOR 2016-2020



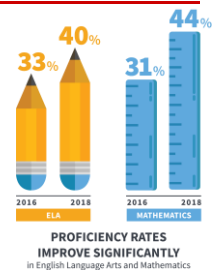
## National Assessment of Educational Progress (NAEP)

- Mississippi is making **faster progress** on NAEP than most other states in the country



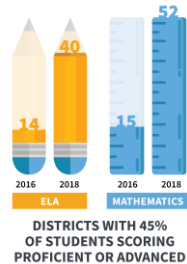
## English Language Arts (ELA) and Mathematics Proficiency

- ELA and Mathematics proficiency rates **increased annually** since 2016
- All student subgroups saw **proficiency increases** in ELA and Mathematics
- Proficiency rates increased for all grades and subjects since 2016, with overall increases of **7.0 percent in ELA** and **12.3 percent in Mathematics**



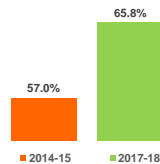
## District Progress: English Language Arts (ELA) and Mathematics

- Number of districts with 45 percent or more students scoring proficient or advanced in English Language Arts and Math roughly **tripled** from 2016 to 2018

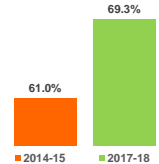


## Districts and Schools Rated C or Higher

### DISTRICTS Rated C or Higher

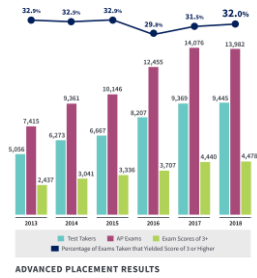


### SCHOOLS Rated C or Higher



## Advanced Placement Achievement

- ❖ AP participation and achievement **nearly doubled** since 2013
- ❖ Number of exams with a **qualifying score of 3 or higher nearly doubled** since 2013
- ❖ **All subgroups increased AP participation** from 2015 to 2018
- ❖ **Greatest increase** in AP qualifying scores from 2017 to 2018 were among **African-American students (+10 percent)** and **Hispanic students (+7.3 percent)**



ADVANCED PLACEMENT RESULTS

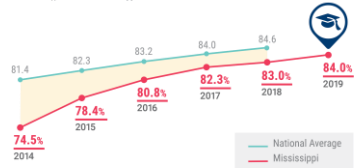
7

## Graduation Rate Reaches All-Time High

- ❖ Graduation rate **increased for all subgroups** from 2014 to 2019
- ❖ Graduation rate for **students with disabilities** saw the **greatest increase** from 23.2 percent to 38.4 percent **(+15.2 percent)**

### MISSISSIPPI'S GRADUATION RATE

Note: Mississippi rates reflect accountability year.



MISSISSIPPI DEPARTMENT OF EDUCATION

8