

Leading from Failure to Success

Reverend Edward Thomas, Board President
Dr. Miskia Davis, Superintendent
Sunflower County Consolidated Schools

**SCHOOL BOARD OF THE SUNFLOWER COUNTY
CONSOLIDATED SCHOOL DISTRICT**



Edward Thomas,
President



Emma Golden,
Vice President



Melanie Townsend,
Secretary



Debra Johnson,
Member



Evelyn Woods,
Member

Backstory of Sunflower County...

Sunflower County Consolidated School District is made up of three former school districts:

- Drew School District
- Indianola Public Schools
- Sunflower County School District

All of the former school districts and the current consolidated district had histories of low performance

All of the former school districts had been under state take-over at one point

There are currently 13 sites, comprised of 15 schools.

Sunflower County Consolidated serves approximately 3300 students in a county that is 71 miles long.

Sunflower County Consolidated serves a demographic that consists of 100% free lunch.

Sunflower County is located in the heart of the Mississippi Delta.

The school district is the largest employer in the county

The story we are about to embark on starts in January 2017 and is a reflection of our current work in improving student achievement.

Now that we have shared some of our obstacles. What are some perceived barriers to success in your district?

www.menti.com

Access Code: 44509938

An aerial photograph of a ship in the middle of a steady turn. The ship is positioned at the top left of the frame, moving clockwise. The water is a deep teal color, and the ship's wake forms a wide, white, circular arc that curves around the ship. The text "Steady Turning" is overlaid in white on the left side of the image.

Steady Turning

Culture

IF SERVING

IS BENEATH YOU

THEN LEADING

IS BEYOND YOU

School Board

Superintendent

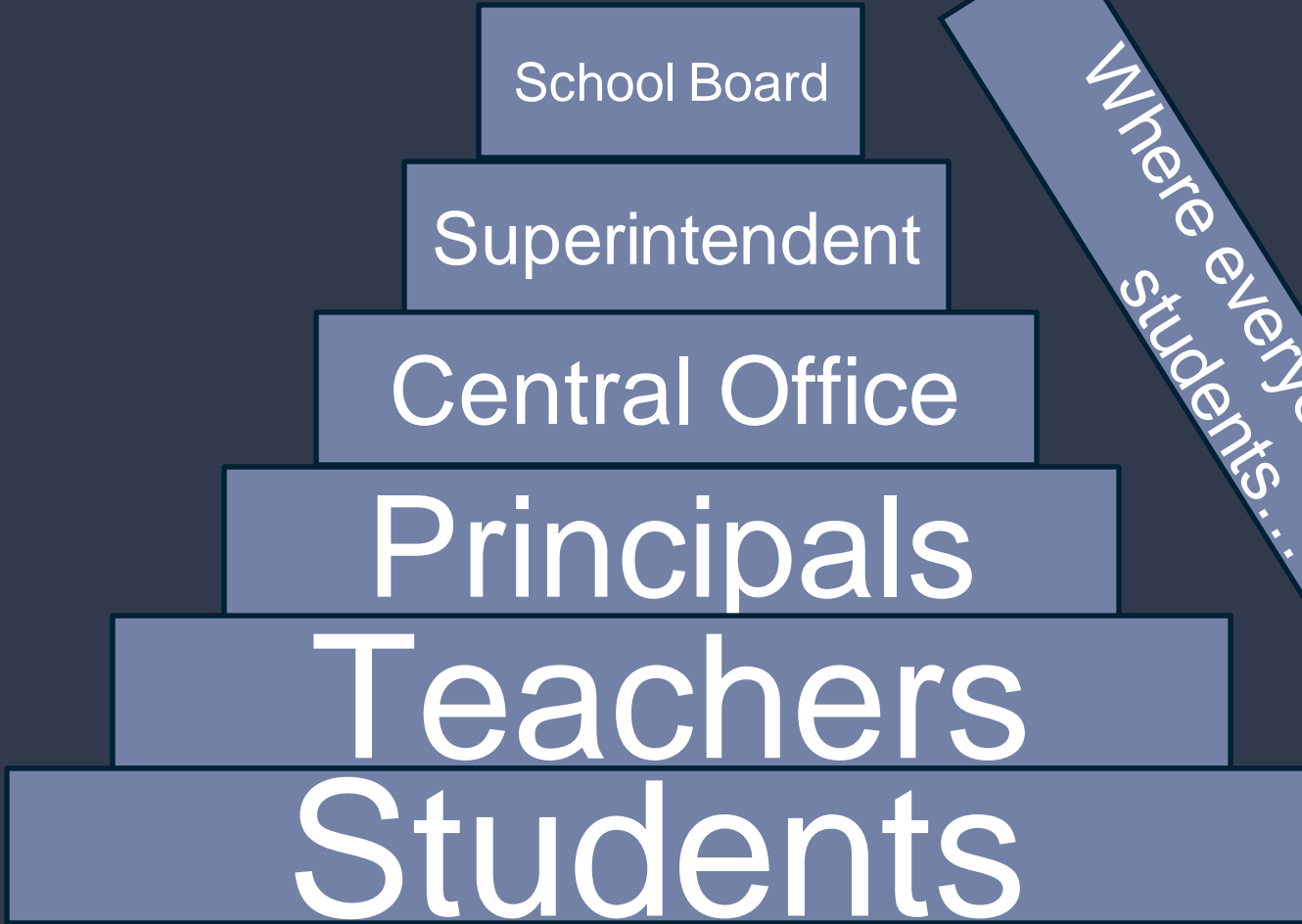
Central Office

Principals

Teachers

Students

Where everyone serves
their superiors



Where everyone serves
students...

SPEAK IN SUCH A WAY
THAT OTHERS LOVE TO
LISTEN TO YOU.

LISTEN IN SUCH A WAY
THAT OTHERS LOVE
TO **SPEAK** TO YOU

CureJoy

transparency
is the first step towards
accountability



What needs to be done in your district to improve culture? What can you do, in your current position, to improve culture?

An aerial photograph of a ship in the middle of a steady turn in the ocean. The ship is positioned at the top left of the frame, moving clockwise. The water is a deep teal color, and the ship's wake is a prominent, white, circular ring that has formed around the ship. The text 'Culture' is overlaid in a light blue box at the top center, and 'Steady Turning' is written in white text on the left side of the image.

Culture

Steady Turning

Finance



What more do I need to
know about my district's
finances?



Culture

Finance

Steady Turning

Personnel





**TREAT
EMPLOYEES
LIKE THEY
MAKE A
DIFFERENCE
AND THEY
WILL.**



Jim Goodnight
CEO, SAS





Congratulations!

Vivian Davis

DISTRICT CUSTODIAN
OF THE YEAR
2020-2021



Sunflower County Consolidated School District
Dr. Mishia Davis, Superintendent

Congratulations!

Ada Mays

DISTRICT SECRETARY
OF THE YEAR
2020-2021



Sunflower County Consolidated School District
Dr. Mishia Davis, Superintendent

Sunflower County Consolidated School District



HAPPY PRINCIPALS DAY!

Rosser Early Learning Center
Daisey Hawkins, Principal



AW James Elementary
Barbara C. Akon, Principal



Carver Elementary
Sonia R. Bolden, Principal



East Sunflower Elementary
Sawanda Washington, Principal



Inverness Elementary
Brenda Singleton, Principal



Lockard Elementary
Daphne Heflin, Principal



Ruleville Central Elementary
Latasha Carroll, Principal



Moorhead Central
Glen Newson, Principal



Drew Hunter Middle
Tony Young, Principal



Robert L. Merritt Junior High
Christopher Turner, Principal



Ruleville Middle
Earnest Nelson, Principal



Gentry High
Edmond Williams, Principal



Thomas Edwards Senior High
Errick Lakes, Principal



Indianola Career & Tech Center
Rosalind Johnson, Director



Indianola Academic
Achievement
Khalilah Ransom, Director



As a board member, what
is my involvement in
personnel?

An aerial photograph of a large ship, possibly a cargo vessel, making a steady turn in the deep blue ocean. The ship's wake is visible, curving around the vessel. Three light blue rectangular boxes with black text are positioned along the top edge of the image. The text 'Steady Turning' is written in white on the left side of the image.

Culture

Finance

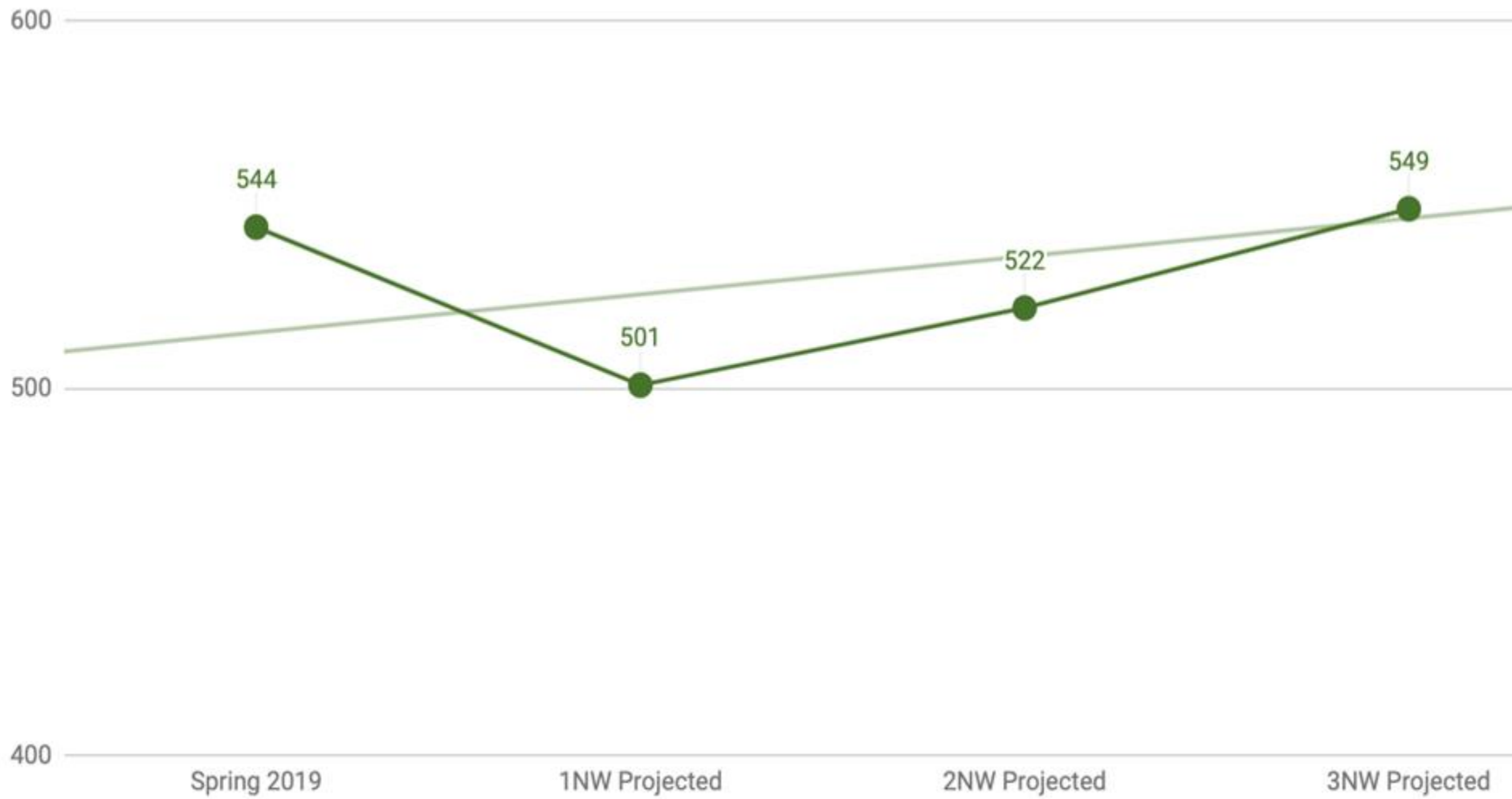
Personnel

Steady Turning

Academics







What can I do as a school board member to improve my relationship with the district's academic data?

An aerial photograph of a large ship, likely a cargo vessel, making a wide turn in the ocean. The ship is positioned in the upper left quadrant, moving towards the center. The water is a deep teal color, and the ship's wake is visible as white foam. Overlaid on the image are several text elements: 'Culture' in a light blue box at the top left, 'Finance' in a light blue box at the top center, 'Personnel' in a light blue box at the top right, 'Steady Turning' in white text on the left side, and 'Academics' in a light blue box at the bottom center.

Culture

Finance

Personnel

Steady Turning

Academics



Sunflower
COUNTY CSD

#WINNING